

Freezin' Fun Project 1

Plaid Penguin

Tammy Civello
(707) 365-6153
tammy@cardsbytlc.com
www.cardsbytlc.com



Cutting Guide:

- Night Of Navy Cardstock 4 1/4"x 11" Top Fold
- 2 Whisper White Layers 4" x 5 1/4" (**One for the inside of the card**)
- Plaid Tidings Strip 1 1/2" x 5"
- Poppy Parade 2 1/8" x 2 1/4"
- Seaside Spray 2 7/8" x 2 1/4"
- 3/4" Whisper White strip for the sentiment

DIES Used:



Using the Largest Stitched Circle for your Just Jade Layer

Using the 2nd Largest Stitched Circle for your Image

Freezin' Fun Project 1

Plaid Penguin

Tammy Civello
(707) 365-6153
tammy@cardsbytlc.com
www.cardsbytlc.com

Embossing Folders Used:



Instructions:

- Stamp your Penguin, Large Tree, and Snowboard using your Memento Black Ink (This is the best ink for alcohol-based markers)
- Using your Stampin' Blends Markers, (My Fave to use and what I used here) Stampin' Write Markers, or even Color Pencils color your images.
- I used the following Stampin' Blends Markers: Just Jade for the Scarf, So Saffron for the beak and web feet, Basic Black for the body of Penguin, and Seaside Spray for the hat, tree, snowboard, and snow. **Tip: Add some Wink of Stella for extra shimmer for your Tree, Hat, and Scarf.**
- Using the Freezin Friends Dies we will now cut out our images. If you do not have the dies or a die-cutting machine, no worries these are super simple to fussy cut with a pair of snips.



- Using Stampin' Dimensionals I popped up my images and adhered them to the Whisper White Circle Punch. Adhere the large tree towards the top left of the circle.

Freezin' Fun Project 1

Plaid Penguin

Tammy Civello

(707) 365-6153

tammy@cardsbytlc.com

www.cardsbytlc.com

- Using A glue dot or a small amount of adhesive attach your Penguin to the snowboard and pop up the image using stampin' dimensionals.
- Using your Seaside Spray Blend color some snow to the bottom of your circle.
- Adhere your Whisper White Circle to your Just Jade Circle using your favorite adhesive. I used Multipurpose Liquid Glue (My Fave because it is the most giving)
- Now it is time to adhere your panels pieces to your Whisper White cardstock.
- Starting with the Plaid Tidings strip adhere to the left side of the card panel. Adhere your Poppy Parade embossed piece to top right, and Seaside Spray embossed piece to bottom right.
- Adhere Whisper White panel piece to Night of Navy cardstock
- Using Stampin' Dimensionals pop up your Just Jade Circle piece and place in the center of the card.
- using your 3/4" Strip piece Stamp your Sending Warmth your way sentiment in any color you choose. I used Poppy Parade for this project. Pop it up with mini dimensionals, or cut your regular in half so it will fit nicely.
- Now it is time to finish off your card and stamp the 4"x 5 1/4" Whisper White cardstock with any sentiment and image you like.

Freezin' Fun Project 1

Plaid Penguin

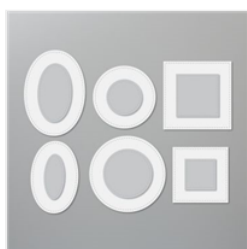
Tammy Civello
 (707) 365-6153
tammy@cardsbytlc.com
www.cardsbytlc.com



[Freezin' Fun Bundle \(English\) - 155176](#)

Price: \$46.75

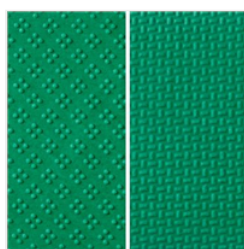
Add to Cart



[Stitched Shapes Dies - 152323](#)

Price: \$30.00

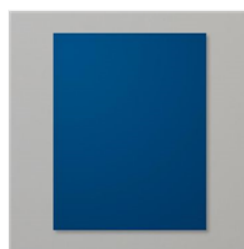
Add to Cart



[Wrapped In Texture Embossing Folders - 153574](#)

Price: \$8.00

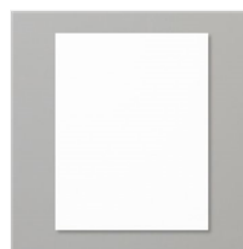
Add to Cart



[Night Of Navy 8-1/2" X 11" Cardstock - 100867](#)

Price: \$8.75

Add to Cart



[Whisper White 8-1/2" X 11" Cardstock - 100730](#)

Price: \$9.75

Add to Cart



[Plaid Tidings 6" X 6" \(15.2 X 15.2 Cm\) Designer Series Paper - 153527](#)

Sale: \$9.78

Price: ~~\$14.50~~

Add to Cart



[Poppy Parade 8-1/2" X 11" Cardstock - 119793](#)

Price: \$8.75

Add to Cart



[Seaside Spray 8-1/2" X 11" Cardstock - 150883](#)

Price: \$8.75

Add to Cart



[Tuxedo Black Memento Ink Pad - 132708](#)

Price: \$6.00

Add to Cart



[Poppy Parade Classic Stampin' Pad - 147050](#)

Price: \$7.50

Add to Cart



[Night Of Navy Classic Stampin' Pad - 147110](#)

Price: \$7.50

Add to Cart



[Seaside Spray Stampin' Blends Combo Pack - 149569](#)

Price: \$9.00

Add to Cart



[Just Jade Stampin' Blends Combo Pack - 153107](#)

Price: \$9.00

Add to Cart



[Basic Black Stampin' Blends Combo Pack - 154843](#)

Price: \$9.00

Add to Cart



[So Saffron Stampin' Blends Combo Pack - 149557](#)

Price: \$9.00

Add to Cart

Freezin' Fun Project 1

Plaid Penguin

Tammy Civello
(707) 365-6153
tammy@cardsbytlc.com
www.cardsbytlc.com



[Wink Of Stella
Clear Glitter Brush
- 141897](#)

Price: \$8.00

[Add to Cart](#)



[Stampin'
Dimensionals -
104430](#)

Price: \$4.00

[Add to Cart](#)



[Mini Stampin'
Dimensionals -
144108](#)

Price: \$4.00

[Add to Cart](#)



[Glue Dots -
103683](#)

Price: \$5.25

[Add to Cart](#)



[Multipurpose
Liquid Glue -
110755](#)

Price: \$4.00

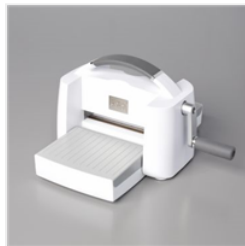
[Add to Cart](#)



[Paper Trimmer -
152392](#)

Price: \$25.00

[Add to Cart](#)



[Stampin' Cut &
Emboss Machine -
149653](#)

Price: \$120.00

[Add to Cart](#)

[Add All to Cart](#)