

Freezin Fun Project 3

Tis the Season Seal Card

Tammy Civello
(707) 365-6153
tammy@cardsbytlc.com
www.cardsbytlc.com



Cutting Guide:

- Purple Posy Card Base 5 1/2"x 8 1/2"
- Snowflake Splendor DSP 3 5/8" x 2 1/2"
- Feels Like Frost DSP 1 3/4" x 5"
- 2 Purple Posy Squares 1 3/8" x 2"
- 2 Whisper White Squares 1 1/4" x 1 7/8"
- Whisper White for Sentiment 3/4" x 3 1/2"
- The Middle Piece of the Scalloped Stitched Rectangle from Stitched so Sweetly in Seaside Spay



- Scalloped Stitched Rectangle in Seaside Spray

Freezin Fun Project 3

Tis the Season Seal Card

Tammy Civello

(707) 365-6153

tammy@cardsbytlc.com

www.cardsbytlc.com



Instructions:

- On your 2 Whisper White Squares Stamp the Seal and Large Tree using your Memento Black Ink (This is the best ink for alcohol-based markers)
- Using Seaside Spray or any shade of blue you can stamp your sentiment on 3/4" x 3 1/2" Whisper White piece
- Using your Stampin' Blends Markers, (My Fave to use and what I used here) Stampin' Write Markers, or even Color Pencils to color your images.
- I used the following Stampin' Blends Markers: Smoky Slate Combo for the Seal, Dark Purple Posy for hat, Dark Seaside Spray for hat and tree, and Light Seaside Spray for water under Seal. **Tip: Use Wink of Stella for Tree, Hat and Water for a little extra love to your project.**
- Using the adhesive of your choice attach Whisper White squares to Purple Posy squares
- Adhere Feel Like Frost Silver Piece to Purple Posy Cardstock
- Adhere Snowflake Splender DSP to Seaside Spray Scalloped Rectangle and attach to center top of Purple Posy cardstock
- Attached 3/4" Sentiment piece to Seaside Spray piece
- Add Stampin Up Dimensionals to Seaside Spray Piece and place in the middle of Snowflake Splender DSP
- Add Stampin Up Dimensionals to squares and add to the bottom center of your Project
- Since the Purple Posy cardstock is light enough you can stamp or write directly on it or you can add a Whisper White Piece 4"x 5 1/4" to the inside of the card.

Freezin Fun Project 3

Tis the Season Seal Card

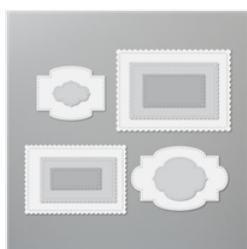
Tammy Civello
 (707) 365-6153
tammy@cardsbytlc.com
www.cardsbytlc.com



[Freezin' Fun Cling Stamp Set \(English\) - 153341](#)

Price: \$23.00

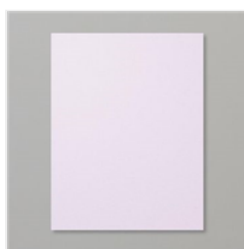
Add to Cart



[Stitched So Sweetly Dies - 151690](#)

Price: \$32.00

Add to Cart



[Purple Posy 8-1/2" X 11" Cardstock - 150881](#)

Price: \$8.75

Add to Cart



[Whisper White 8-1/2" X 11" Cardstock - 100730](#)

Price: \$9.75

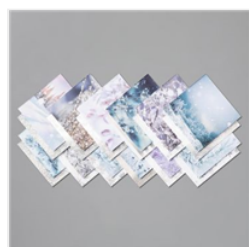
Add to Cart



[Seaside Spray 8-1/2" X 11" Cardstock - 150883](#)

Price: \$8.75

Add to Cart



[Feels Like Frost 6" X 6" \(15.2 X 15.2 Cm\) Specialty Designer Series Paper - 150444](#)

Price: \$15.00

Add to Cart



[Snowflake Splendor Designer Series Paper - 153512](#)

Sale: \$9.78

Price: ~~\$11.50~~

Add to Cart



[Tuxedo Black Memento Ink Pad - 132708](#)

Price: \$6.00

Add to Cart



[Seaside Spray Classic Stampin' Pad - 150085](#)

Price: \$7.50

Add to Cart



[Smoky Slate Stampin' Blends Combo Pack - 154904](#)

Price: \$9.00

Add to Cart



[Seaside Spray Stampin' Blends Combo Pack - 149569](#)

Price: \$9.00

Add to Cart



[Purple Posy Stampin' Blends Combo Pack - 149566](#)

Price: \$9.00

Add to Cart



[Wink Of Stella Clear Glitter Brush - 141897](#)

Price: \$8.00

Add to Cart



[Stampin' Dimensionals - 104430](#)

Price: \$4.00

Add to Cart



[Multipurpose Liquid Glue - 110755](#)

Price: \$4.00

Add to Cart

Freezin Fun Project 3

Tis the Season Seal Card

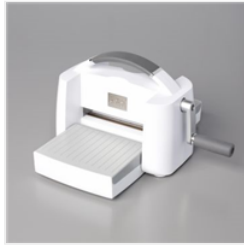
Tammy Civello
(707) 365-6153
tammy@cardsbytlc.com
www.cardsbytlc.com



[Paper Trimmer -
152392](#)

Price: \$25.00

Add to Cart



[Stampin' Cut &
Emboss Machine -
149653](#)

Price: \$120.00

Add to Cart

Add All to Cart